



Quality-features of an EUR pallet



Available in 4 different sizes:



1. **EUR-pallet** - 800 x 1200 mm



2. **EUR 2-pallet** - 1200 x 1000 mm



3. **EUR 3-pallet** - 1000 x 1200 mm



4. **EUR 6-pallet** - 800 x 600 mm

How can i identify an EPAL quality pallet:



Standardized nailing: Only nails arranged in this way ensure the requisite stability



Chamfered bases: to make handling considerably easier



No waney edges and no significant mould growth



On the left block: the mark of the European Pallet Association, i.e. **EPAL**



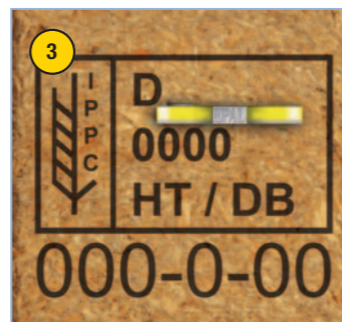
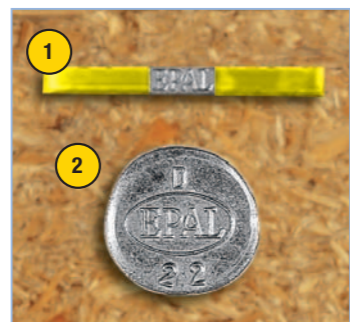
On the center block: the mark of the authorising railway company, e.g. DB; a mark denoting the country, e.g. D; the manufacturer's code



Right-hand marking: the mark of the European railway pallet pool, i.e. **EUR**

More features:

1. Only certified pallets are provided with a control clamp bearing the **EPAL** symbol
2. Only certified pallets have an authentic repair nail bearing the **EPAL** quality symbol
3. ISPM 15 treated EUR-pallets are marked on both central blocks of the longitudinal side



www.epal.eu



EPAL European Pallet Association e.V.
An den Speichern 6
48157 Muenster / Germany

fon +49 (0) 251 284 39 70
fax +49 (0) 251 284 39 72
mail info@epal-pallets.org