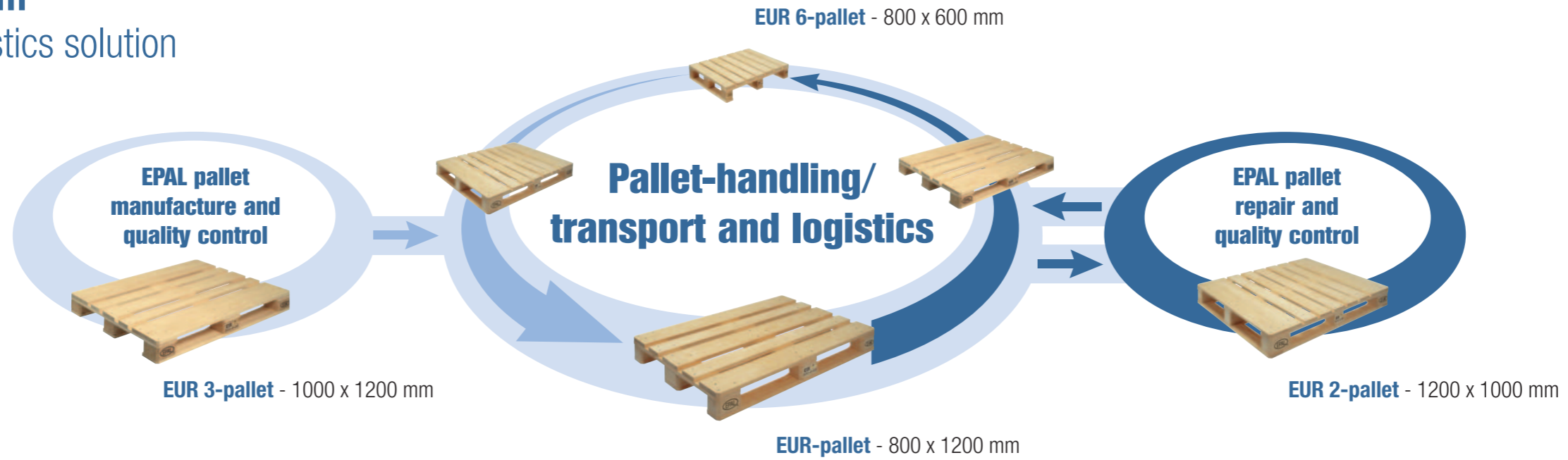




# Criteria for exchanging EUR pallets



## The EPAL-pallet-system The ideal worldwide logistics solution



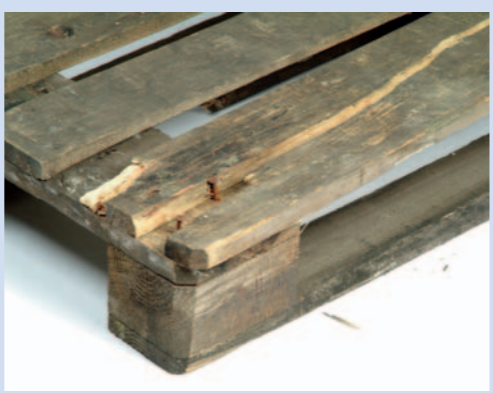
## Non-exchangeable pallets:



A single upper or lower leading board is damaged so that more than one nail or screw shank is revealed.



A block is missing or split to the point where more than one nail shank is visible.



A board is broken across its width.



More than two upper or lower leading boards are damaged and reveal one nail or screw shank for each board.



A board is missing.



The **EUR** mark on the right or for example, the **EPAL** symbol on the left is missing.

## Other characteristics: Poor condition overall

- The loading capacity can no longer be guaranteed (fungal decay or insect attack)
- Contamination is such that products may be soiled
- Large splinters are coming away from a number of blocks
- There is evidence that inadmissible construction elements have been used, e.g. boards and blocks that are obviously weak

www.epal.eu



EPAL European Pallet Association e.V.  
An den Speichern 6  
48157 Muenster / Germany

fon +49 (0) 251 284 39 70  
fax +49 (0) 251 284 39 72  
mail info@epal-pallets.org

